

K4 Daily Schedule

7:40 - 8:10 School begins at 8:00 AM	Arrival
8:10 - 8:20	Morning Meeting
8:20 - 8:45	ChristLight Chapel -Friday (8:00-8:50)
8:45 - 9:20	Center Time with Literacy and Math Skills
9:25 - 9:45	Snack Time
9:45 - 10:05	Recess
10:05 - 10:30	Theme Time
10:30 - 11:10	Choice Time
11:10 - 11:30	Calendar Time, Pack up and Dismissal Closing Prayer

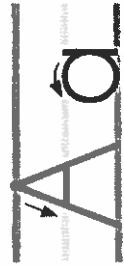
How do I know if my child ready?

1. Is your child completely potty trained?
2. Can your child follow one step directions?
3. Can your child handle being away from you for short periods of time?
4. Can your child focus on a task for a short period of time?
5. Does your child get excited about playing with other children?
6. Does your child have the basic self-care skills?(put on shoes, jackets, or sweatshirts, blow their nose, zip a coat, cleaning up their toys)
7. Do they enjoy listening to a story or reading a book?

Begin practicing now! They will have more confidence if they know they can take care of themselves!

SUPERKIDS GUIDE TO FORMING MANUSCRIPT LETTERS

Ice Cream Lines on the Student and Teacher White Boards help children distinguish between top, middle, and bottom during handwriting instruction and practice. The top line is the strawberry line, the middle is the vanilla line, and the bottom is the chocolate line. Order Ice Cream Paper by contacting us at 888-378-9258 or at superkidsreading.org.



Capital A. Start at the top strawberry line and make a slanted line to the left going down to the bottom chocolate line. Lift your pencil and go back to where you started. Make a slanted line to the right, going down to the chocolate line. Connect your two lines by drawing a line from left to right across the middle vanilla line.

Lowercase a. Start just below the middle vanilla line and make a complete circle. Without lifting your pencil, make a straight line up to the vanilla line and pull the same line straight down to the bottom chocolate line.



Capital B. Start at the top strawberry line and draw a straight line down to the bottom chocolate line. Pick up your pencil and go back to where you started. Curve your line out and then back across the middle vanilla line to touch your straight line. Curve out again and go down across the bottom chocolate line to touch your straight line.

Lowercase b. Start at the top strawberry line and draw a straight line down to the bottom chocolate line. Go back up your line. Just before the middle vanilla line, curve up and around to form a circle that sits on the bottom chocolate line and comes back to your first straight line.



Capital C. Start just below the top strawberry line. Go up to the top strawberry line and start to make a circle. Continue down through the middle vanilla line and turn your circle so it sits on the bottom chocolate line. Then turn your circle a little more and stop just above the bottom chocolate line.

Lowercase c. Start just below the middle vanilla line. Go up to the vanilla line and start to make a circle. Bring your line down and around so it sits on the bottom chocolate line. Then turn it up just a bit above the chocolate line.



Capital D. Start at the top strawberry line and draw a straight line down to the bottom chocolate line. Lift your pencil and go back to where you started. Make a big stomach on the D. Curve through the middle vanilla line and then back to the bottom chocolate line so that the stomach looks like a half circle.

Lowercase d. Start right below the middle vanilla line and make a circle. Without lifting your pencil, make a straight line up to the top strawberry line. Then come back down the line you made

and keep going all the way to the bottom chocolate line.



Capital E. Start at the top strawberry line and draw a straight line down to the bottom chocolate line. Lift your pencil and place it back on your first line each time as you make a long line across the strawberry line, a shorter line across the middle vanilla line, and another long line across the bottom chocolate line.

Lowercase e. Start in the space in between the middle vanilla line and the bottom chocolate line. Make a line across the space from left to right. Go up to the vanilla line and start to make a circle. Bring your line down and around so it sits on the bottom chocolate line. Continue up just a little more and stop before closing the circle.



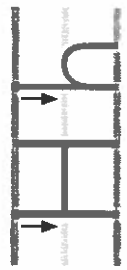
Capital F. Start at the top strawberry line and draw a straight line down to the bottom chocolate line. Lift your pencil and go back to where you started. Draw a long line across the top strawberry line going to the right. Now lift your pencil again and draw a shorter line across the middle vanilla line.

Lowercase f. Start just below the top strawberry line. Curve up to the strawberry line, then without lifting your pencil, make a straight line down to the bottom chocolate line. Lift your pencil, then start at the middle vanilla line and draw a line across your first line from left to right.



Capital G. Start just below the strawberry line and go up to the top strawberry line and start strawberry line and start to make a circle. Curve down and across the bottom chocolate line. Continue up to the middle vanilla line, then make a short straight line across the vanilla line and pointing into the center of the G.

Lowercase g. Start just below the middle vanilla line. Make a circle, then a straight line up to the vanilla line. Go back over your line, pulling straight down past the bottom chocolate line and halfway into the space below. Curve your line up until it almost touches the chocolate line.



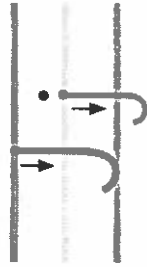
Capital H. Start at the top strawberry line and draw a straight line down to the bottom chocolate line. Move over a finger's width and make another straight line from the top strawberry line to the bottom chocolate line. Connect the two lines by going across from left to right on the middle vanilla line.

Lowercase h. Start at the top strawberry line and draw a straight line down to the bottom chocolate line. Without lifting your pencil, go back up your line. A little below the middle vanilla line, start making a curve. Round the curve on the middle vanilla line then come straight down to the bottom chocolate line.



Capital I. Start at the top strawberry line and draw a straight line down to the bottom chocolate line. Lift your pencil and go back to the strawberry line. Start on the left side of your first line and make a short straight line across it. Lift your pencil and go to the bottom chocolate line. Make a short straight line across your first line.

Lowercase i. Start at the middle vanilla line and draw a straight line down to the bottom chocolate line. Lift your pencil and make a small dot just above the middle vanilla line.



Capital J. Start at the top strawberry line and draw a line straight down toward the bottom chocolate line. Just before reaching the chocolate line, curve around to the left, then turn up and stop just above the chocolate line.

Lowercase j. Start at the middle vanilla line. Draw a straight line down past the chocolate line and into the space below. Curve to the left to make a tail. Lift your pencil and make a dot over the j above the middle vanilla line.



Capital K. Start at the top strawberry line and draw a straight line down to the bottom chocolate line. Lift your pencil and place it back at the top strawberry line about a thumb's distance from your first line. Make a slanted line from here that touches your first line just at the middle vanilla line. Without lifting your pencil, draw a line slanting away from your first line and going down to the bottom chocolate line.

Lowercase k. Start at the top strawberry line and draw a straight line down to the bottom chocolate line. Lift your pencil and place it on the middle vanilla line a little bit away from your first line. Draw a slanted line toward your first line and touch it in the middle between the vanilla and chocolate lines. Without lifting your pencil, draw a line slanting away from your first line and going down to the bottom chocolate line.



Capital L. Start at the top strawberry line and draw a straight line down to the bottom chocolate line. Without lifting your pencil, draw a short line across the chocolate line.

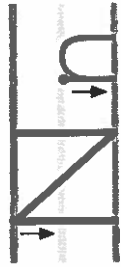
Lowercase l. Start at the top strawberry line and draw a line straight down to the bottom chocolate line.



Capital M. Start at the top strawberry line and draw a straight line down to the bottom chocolate line. Lift your pencil and go back to where you started. Make a line slanting away from your first line and going down to the bottom chocolate line. Without lifting your pencil, draw a slanted line back up to the top strawberry line. When you reach the top strawberry line, draw a line straight down to the bottom chocolate line.

Lowercase m. Start at the middle vanilla line and draw a straight line down to the bottom chocolate line. Without lifting your pencil, go back up your line. Just before you get to the middle vanilla line, make a curve, then come down to the bottom chocolate line. Go back up

this line and make another curve before you get to the middle vanilla line. Come straight down to the bottom chocolate line once more.



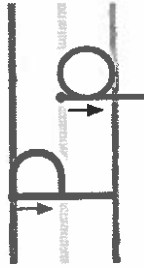
Capital N. Start at the top strawberry line and draw a straight line down to the bottom chocolate line. Lift your pencil and go back to where you started. Draw a line slanting away from your first line and going down to the chocolate line. Without lifting your pencil, draw a straight line back up to the top strawberry line.

Lowercase n. Start at the middle vanilla line and draw a straight line down to the bottom chocolate line. Go back up your line, but just before you reach the middle vanilla line, curve around on top of the middle vanilla line. Then go straight down to the bottom chocolate line.



Capital O. Start just below the top strawberry line. Go up to the top strawberry line and start making a circle. Continue down through the middle vanilla line and turn so your circle sits on the bottom chocolate line. Keep going up through the middle vanilla line and all the way back to where you started.

Lowercase o. Start just below the middle vanilla line. Go up to the vanilla line and start to make a circle. Bring your line down and around so it sits on the bottom chocolate line. Then turn up and continue all the way back to where you started at the middle vanilla line.



Capital P. Start at the top strawberry line and draw a straight line down to the bottom chocolate line. Lift your pencil and go back to where you started. Draw a line on the top strawberry line, then curve around and along the middle vanilla line until you touch your first line.

Lowercase p. Start at the middle vanilla line and draw a straight line down through the chocolate line to the space below. Without picking up your pencil, go back up your line. Just before the middle vanilla line, curve up and around to form a circle that sits on the bottom chocolate line and comes back to your first straight line.



Capital Q. Start just below the top strawberry line. Go up to the top strawberry line and start making a circle. Continue down through the middle vanilla line and turn so your circle sits on the bottom chocolate line. Keep going up through the middle vanilla line and all the way back to where you started. Lift your pencil and place it just inside your circle. Draw a short slanted line to the bottom chocolate line.

Lowercase q. Start just below the middle vanilla line and make a complete circle. Without lifting your pencil, make a straight line up to the vanilla line and pull the same line straight down through the bottom chocolate line, halfway into the space below. Curve to the right to make a tail.



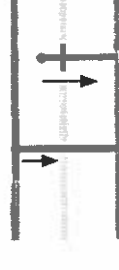
Capital R. Start at the top strawberry line and draw a straight line down to the bottom chocolate line. Lift your pencil and go back to where you started. Curve out, then back in over the middle vanilla line until you touch your first line. Without picking up your pencil, draw a slanted line from the middle vanilla line to the bottom chocolate line.

Lowercase r. Start at the middle vanilla line and draw a straight line down to the bottom chocolate line. Without lifting your pencil, go back up your line. Just before you reach the middle vanilla line, curve around and put a hook on your r.



Capital S. Start just below the top strawberry line. Go up to the strawberry line and start making a circle. Curve in on the middle vanilla line. Then make a curve going the other way. Turn up on the bottom chocolate line and go a little way up toward the vanilla line and stop.

Lowercase s. Start just below the middle vanilla line. Start making a circle, but halfway through make your curve go around the other way. Turn up on the bottom chocolate line and go a little way up toward the middle vanilla line and stop.



Capital T. Start at the top strawberry line and draw a straight line down to the bottom chocolate line. Pick up your pencil and make a short line from left to right across the T on the top strawberry line.

Lowercase t. Start in the space between the top strawberry line and the middle vanilla line. Draw a straight line down to the bottom chocolate line. Pick up your pencil and make a short line from left to right across the t on the middle vanilla line.



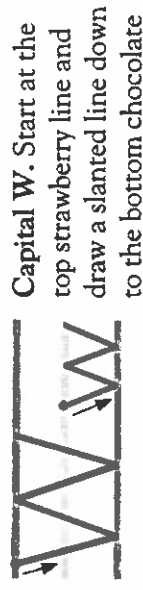
Capital U. Start at the top strawberry line. Bring your line straight down and curve up on the bottom chocolate line. Keep going up until you touch the strawberry line again.

Lowercase u. Start at the middle vanilla line. Bring your line straight down and curve up on the bottom chocolate line. Keep going up until you touch the middle vanilla line again. Without lifting your pencil, make a straight line down to the bottom chocolate line.



Capital V. Start at the top strawberry line and draw a slanted line down to the bottom chocolate line. Without lifting your pencil, make another slanted line going right back up to the top strawberry line.

Lowercase v. Start at the middle vanilla line and draw a slanted line down to the bottom chocolate line. Without lifting your pencil, make another slanted line going right back up to the middle vanilla line.



Capital W. Start at the top strawberry line and draw a slanted line down to the bottom chocolate line. Without lifting your pencil, make a slanted line back up to the top strawberry line. Keep going, making another slanted line back down to the bottom chocolate line and then another slanted line back up to the top strawberry line.

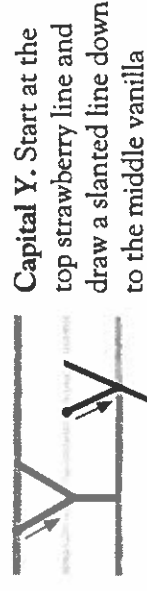
Lowercase w. Start at the middle vanilla line and draw a slanted line down to the bottom chocolate line. Without lifting your pencil, make a slanted line back up to the middle vanilla line. Keep going, making another slanted line back down to the bottom chocolate line and then another slanted line back up to the middle vanilla line.



Capital X. Start at the top strawberry line and draw a slanted line down to the bottom chocolate

line. Pick up your pencil and put it back at the top strawberry line about a thumb's width from your first line. Make another slanted line down to the bottom chocolate line, crossing over your first line at the middle vanilla line.

Lowercase x. Start at the middle vanilla line and draw a slanted line down to the bottom chocolate line. Pick up your pencil and put it back at the middle vanilla line about a thumb's width from your first line. Make another slanted line down to the bottom chocolate line, crossing over the middle of your first line.



Capital Y. Start at the top strawberry line and draw a slanted line down to the middle vanilla line. Without lifting your pencil, make another slanted line back up to the top line. Lift your pencil and place it where your two lines meet on the middle vanilla line. Make a straight line down to the bottom chocolate line.

Lowercase y. Start at the middle vanilla line and draw a slanted line down to the bottom chocolate line. Lift your pencil and place it back on the middle vanilla line about a thumb's width away from your first line. Draw a long slanted line through the bottom chocolate line into the space below.



Capital Z. Start at the top strawberry line. Make a short line from left to right, about a thumb's

width long. Without lifting your pencil, make a slanted line to the left and down to the chocolate line. Keep going, making a short line to the right across the chocolate line.

Lowercase z. Start at the middle vanilla line. Make a short line from left to right, about a thumb's width long. Without lifting your pencil, make a slanted line to the left and down to the chocolate line. Make a short line to the right across the chocolate line.

